

iTrack Vario Series

**TL20-20W**

Optical Lens

Technical Parameters:

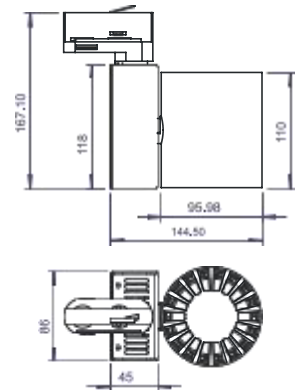
Name	Parameters
Light source:	COB
Input Voltage:	AC220~240V 50/60Hz
LED Current:	500mA, 35-37V
Rated life:	>50,000 hours
Operating temperature:	-20°C~40°C
Storage temperature:	-30°C~60°C
Certificate:	CE/RoSH
Weight:	1.20KG



Accessory



TL-Vario-05



Ordering Information:

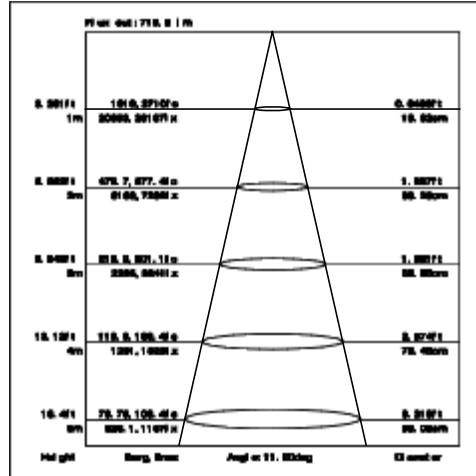
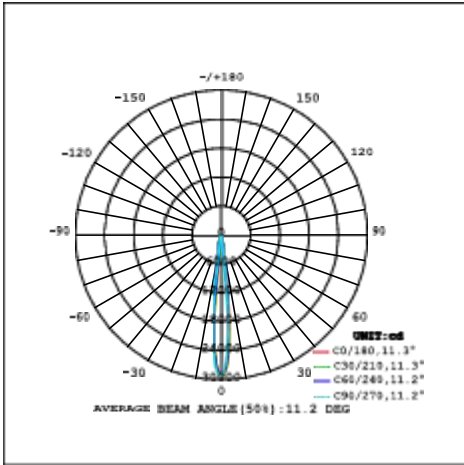
○ White ● Black

Power	CRI	Beam Angle	Luminous	CCT	Housing	Part Number
20W	>95	▲ 10°	1520lm	3000K	○	TL204-20W-930-W-10
					●	TL204-20W-930-B-10
	▲ 20°		1430 lm	3000K	○	TL204-20W-930-W-20
					●	TL204-20W-930-B-20

Technical Data test pattern

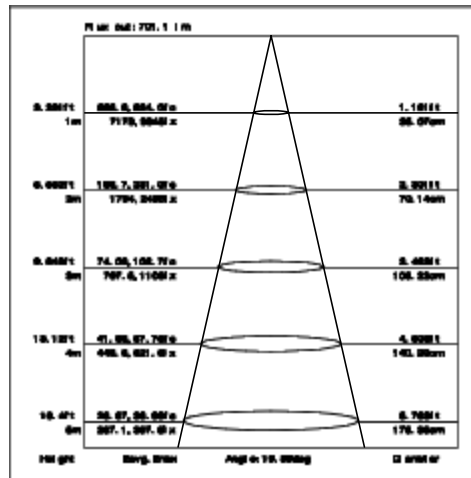
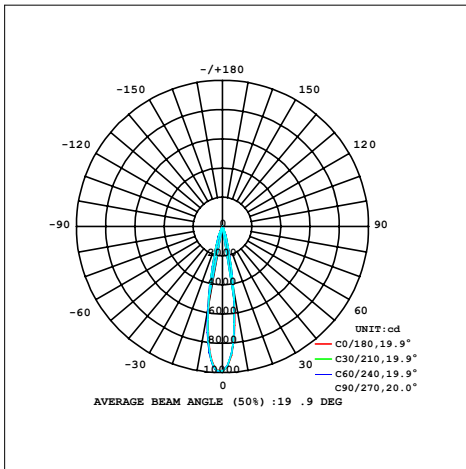
CRI95 10°

3000K



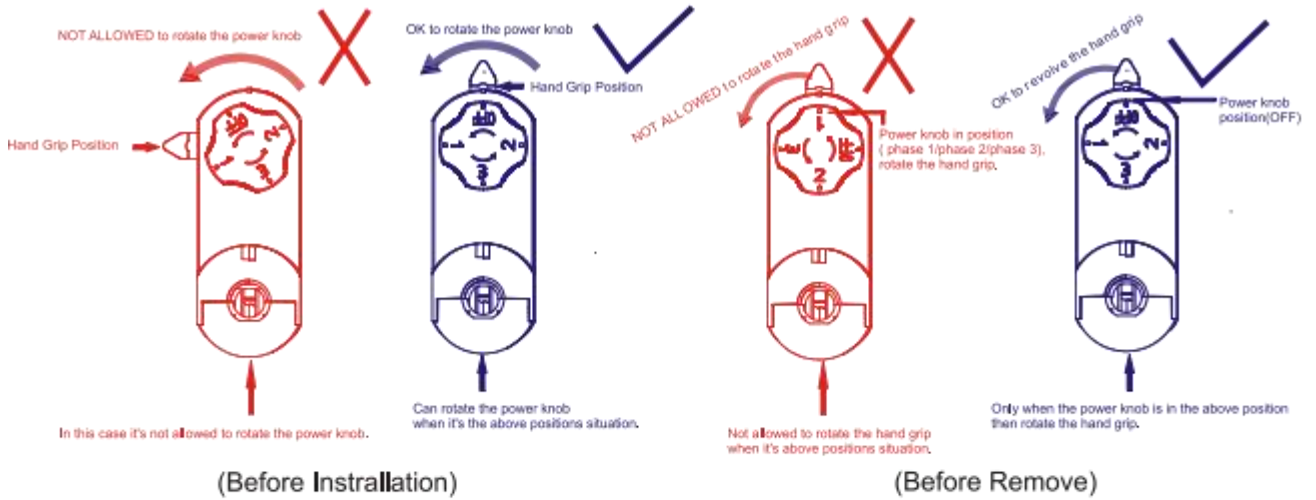
CRI95 20°

3000K

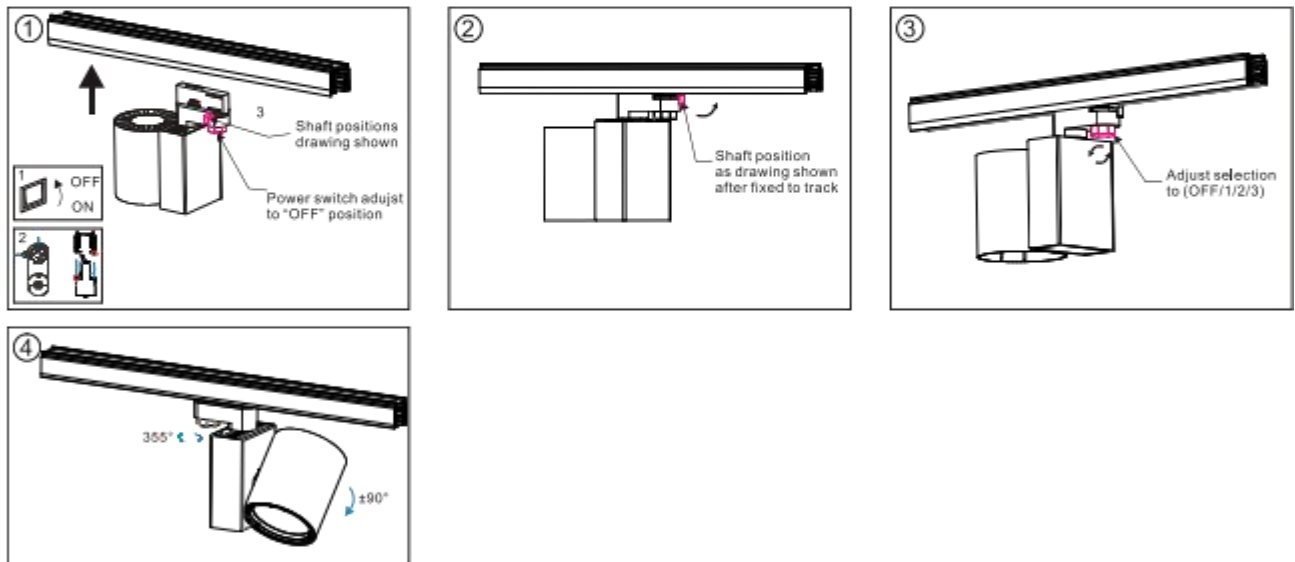


Installation instruction

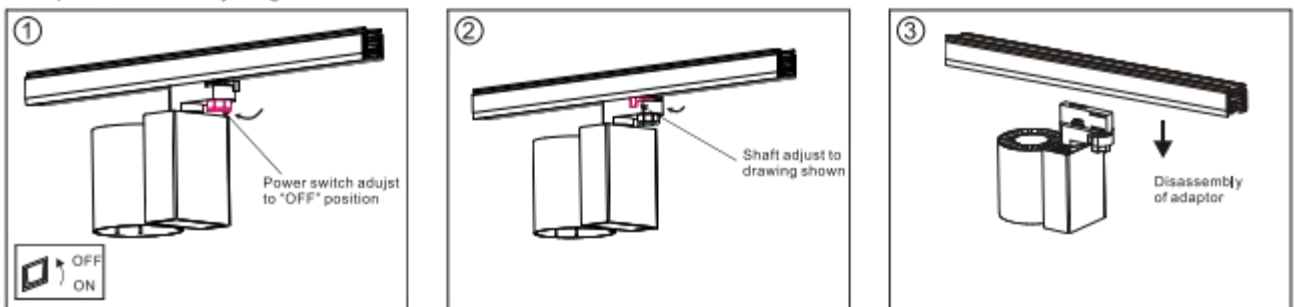
Cautions



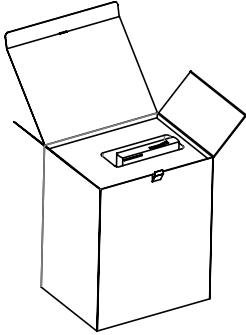
Adaptor installation diagram



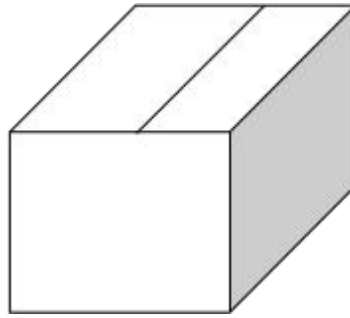
Adaptor disassembly diagram



Packaging:



**Box**  
 L160\*W110\*H190mm  
 1pc/box  
 GW: 1.3kg/box



**Outer carton**  
 L455\*W335\*H400mm  
 16pcs/CTN  
 GW: 22kg/carton

Product naming system

